

**Enterprise-class,
Layer 2 10/100 switch
for small and medium
businesses, voice ready
with PoE and advanced
features for network
control and flexibility**

OVERVIEW

The “smart” voice-ready 3Com® Baseline Switch 2426-PWR Plus is a web-managed Layer 2 10/100 Ethernet switch that delivers enterprise-class features, customized and priced for small- and mid-sized organizations. With an easy-to-use switch interface and advanced features (VLANs, IEEE 802.1X authentication and Rapid Spanning Tree), twenty-four 10/100 and two dual-purpose Gigabit ports, and Power over Ethernet (PoE), the Baseline Switch 2426-PWR Plus is the most cost-effective way to provide a converged network.

KEY BENEFITS

LAYER 2 SWITCHING WITH ADVANCED FEATURES

The Baseline Switch 2426-PWR Plus has twenty-four PoE-enabled 10/100 and two dual-purpose Gigabit ports (copper or SFP-based fiber) to connect to high-performance computers, servers, or network backbones.

The switch provides non-blocking performance—all ports perform at wirespeed which helps to eliminate network traffic bottlenecks. Manual link aggregation allows ports to be grouped together to form an ultra-high-bandwidth connection that greatly expands bandwidth capacity to the network core.

This “smart” switch has the features that help build a voice ready network, with support for auto-voice VLAN, SNMP-based management, IGMP snooping and query and IEEE 802.1X for strengthening security.

The Baseline Switch 2426-PWR Plus also supports Spanning Tree and Rapid Spanning Tree, traffic prioritization, priority queuing and VLANs. These switching features ensure optimal use of available bandwidth as traffic flow is directed according to the needs of the business.

POWER OVER ETHERNET

The Baseline Switch 2426-PWR Plus provides a total of 180 watts inline power to attached devices—access points, Voice over IP (VoIP) phones, IP security cameras, etc.—over a single Ethernet cable, resulting in significant deployment cost savings. Industry-standard IEEE 802.3af Power over Ethernet with 15.4 Watts of power is supported, as is the newer pre-standard 802.3at with up to 29.6 Watts per port.

NO SWITCH SETUP REQUIRED

This Baseline Plus switch is operational straight out-of-the-box; as long as default settings are acceptable, there is no need to configure the switch. If desired, the switch can be configured using a web browser or SNMP management software.



3Com Baseline Switch 2426-PWR Plus

KEY BENEFITS

(CONTINUED)

ENHANCED INTUITIVE MANAGEMENT OPTIONS

For networks that require more control, the switch management interface allows even novice users to quickly and confidently configure the switch during initial setup or normal operation.

In addition, the web interface features individual port-traffic monitoring (port mirroring) and a unique, quick-glance switch status review. A cable diagnostic tool lets users troubleshoot basic connectivity problems via the web management interface further simplifying network installation.

The switch also supports a compact Command Line Interface (CLI) that is accessed via the front panel console port. Using the CLI, major switch management options can be quickly configured.

THREE YEAR HARDWARE WARRANTY

This switch comes with a Three Year Limited Hardware Warranty. Also provided is Advanced Hardware Replacement, with next business day shipment available in most regions.

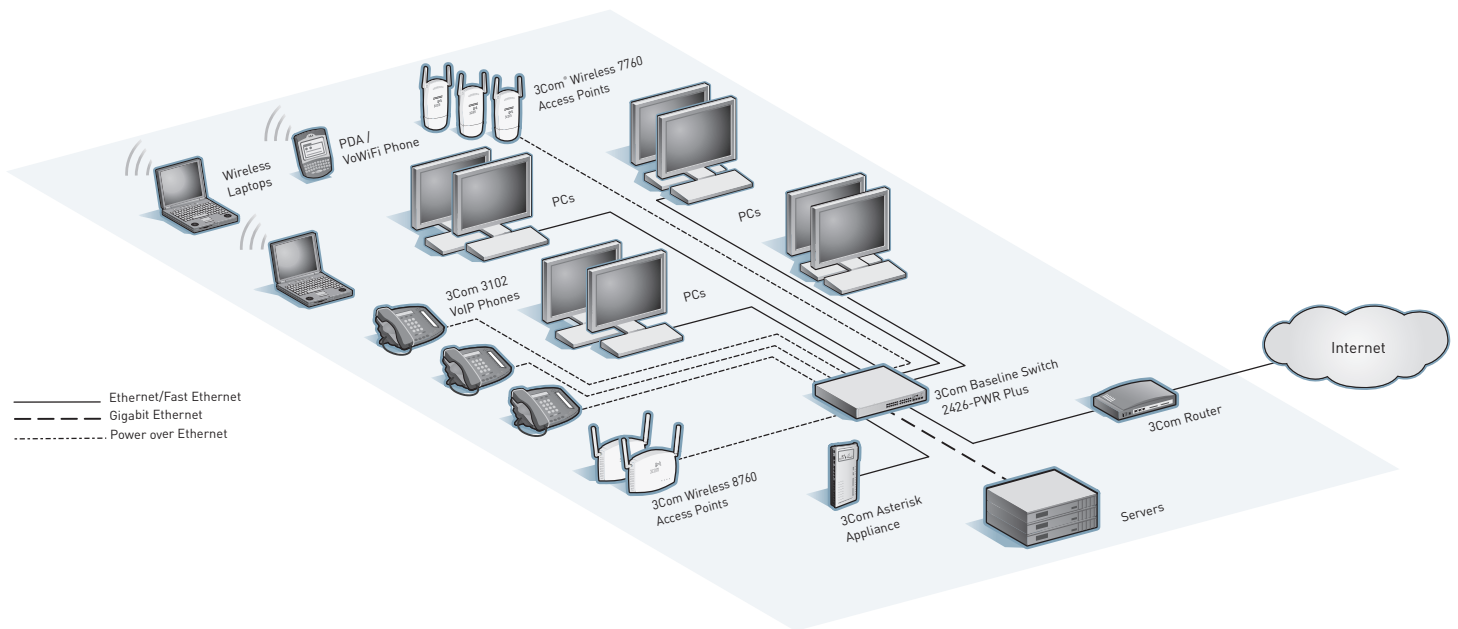
SERVICE

3Com products are backed by 3Com Global Services and authorized partners with demonstrated expertise in network assessment, implementation and maintenance. Ask about which 3Com Network Health Check, installation services and maintenance service packages are available in your area.

FEATURES HIGHLIGHTS

Feature	Description
Traffic prioritization and auto-voice VLAN	Traffic prioritization, using IEEE 802.1p Quality of Service (QoS), and automatic assignment of VoIP traffic to dedicated VLANs help ensure that critical time-sensitive traffic gets the priority needed for quality communications.
Outstanding value	Take advantage of flexible, configurable and powerful switching that costs not much more than an unmanaged switch.
Flexible Gigabit uplinks	Daisy-chain multiple units together via the built-in copper Gigabit uplink ports or connect to a network backbone via SFP-based fiber modules.
Enhanced browser-based user interface	Easy-to-use user interface allows even the most novice users to configure the switch during initial setup and monitor it during normal operation.
PoE support	Provides power for IP phones, wireless LAN access points, and other compliant devices over the same cable used for data; lowers total cost of ownership since there is no need to run additional electrical wiring.
VLANs	Segment the network by grouping users based on their data or traffic exchange requirements. This ensures optimal use of available bandwidth as traffic flow is directed according to the needs of the business.
Manual link aggregation (trunking)	Group together any number of ports to form an ultra-high-bandwidth connection to the network backbone; help prevent traffic bottlenecks.
Traffic monitoring (port mirroring)	Administrators can examine suspect data streams received on any port by mirroring the data stream to a monitoring port.
IEEE 802.1X network access control	Provides standards-based security with EAP-MD5 encryption.
SNMP support	Switch can be managed with SNMP-compatible tools.
Rapid Spanning Tree Protocol (RSTP) support	Improves network compatibility, scalability and availability.
IGMP snooping and query	Multicast filtering optimizes network performance, instead of flooding traffic to all ports.
PoE configuration	PoE power can be enabled or disabled per unit and per port; power can also be limited per port.
Cable diagnostics	Remotely detect cable issues using a browser-based tool.

BASELINE SWITCH 2426-PWR PLUS IN A CONVERGED NETWORK



VOICE READY NETWORK

3Com Voice Ready Networks provide an innovative and holistic approach to assessing, recommending and implementing a converged network, solving the most vexing challenges that confront IT managers as they deploy Internet Protocol (IP) telephony systems. With 3Com Voice Ready Networks, organizations can optimize network infrastructure for realtime voice and video traffic, ensure secure communications and protect business assets.

The Baseline Switch 2426-PWR Plus is an integral component of this approach, offering:

- › Automatic assignment of voice traffic to separate VLANs
- › IEEE 802.1p prioritization and 802.1Q VLANs
- › IEEE 802.1X authentication
- › Two dual-personality Gigabit SFP ports
- › SNMP support
- › Power over Ethernet

SPECIFICATIONS

CONNECTORS

26 total available ports, comprised of:

- 24 auto-negotiating 10BASE-T/100BASE-TX configured as auto MDI/MDIX
- 2 dual-personality Gigabit port pairs, configurable as 10BASE-T/100BASE-TX/1000BASE-T or SFP

PERFORMANCE

8.8 Gbps switching capacity, max.
6.6 Mpps forwarding rate, max.
Wirespeed performance across ports
Store-and-forward switching

LAYER 2 SWITCHING

8,192 MAC addresses in address table
256 port-based VLANs (IEEE 802.1Q)
Manual link aggregation: 4 10/100 trunks with 8 ports per trunk, max.; additional trunk for SFP ports
Auto-negotiation of port speed and duplex
IEEE 802.3x full-duplex flow control
IEEE 802.1D Spanning Tree Protocol (STP)
IEEE 802.1w Rapid Spanning Tree Protocol (RSTP)
Internet Group Management Protocol (IGMP) snooping on Layer 2 interfaces
Multicast filtering

CONVERGENCE

4 hardware queues per port, with IEEE 802.1p Class of Service/Quality of Service (CoS/QoS) on egress
Weighted Round Robin queuing
Traffic prioritization at Layer 2 using 802.1p QoS
Auto VLAN assignment for voice traffic determined by vendor OUI

SECURITY

IEEE 802.1X Network login;
EAP-MD5 encryption

POWER OVER ETHERNET

IEEE 802.3af
15.4W per port; 180W per switch; max.
IEEE 802.3at, pre-standard
29.6W per port; 180W per switch; max.

MANAGEMENT

Web-based configuration for:

- Port speed and duplex configuration
- Spanning tree
- VLANs
- IGMP snooping
- Link aggregation
- IGMP query
- Traffic monitoring
- Broadcast storm control
- SNMP v1 and v2

Compatible with SNMP management tools like 3Com Network Supervisor and 3Com Network Director
CLI management supports initial setup of switch

LED INDICATORS

Module active, power, network traffic/duplex mode, link status/speed

AT-A-GLANCE TRAFFIC MONITORING

Ports: active, enabled, disabled
Modules: present, active

POWER SUPPLY

Input voltage: 100-240 VAC, 50/60 Hz
Current rating: 3A, max.
Power consumption: 290W, max.
Power dissipation: 478 BTU/hr, max.
Power inlet: IEC 320

DIMENSIONS

Height: 4.3 cm (1.7 in or 1 RU)
Width: 44.0 cm (17.3 in)
Depth: 24.0 cm (9.4 in)
Weight: 3.3 kg (7.3 lb)

ENVIRONMENTAL REQUIREMENTS

Operating temperature: 0° to 40°C (32° to 104°F)
Operating humidity: 10 to 95% (non-condensing)
Standard: EN 60068 (IEC 68)

REGULATORY AND AGENCY APPROVALS

Safety: UL 60950-1, EN 60950-1, CSA 22.2 60950-1, IEC 60950-1
Emissions: EN 55022 Class A, FCC Part 15 Subpart B Class A, ICES-003 Class A, VCCI Class A, AS/NZS 3548 Class A, Environmental: EN 60068 (IEC 68)
Immunity: EN 55024

IEEE STANDARDS SUPPORTED

IEEE 802.1d Spanning Tree
IEEE 802.1p Priority Tags
IEEE 802.1Q VLANs
IEEE 802.1X Port Security
IEEE 802.1w Rapid Spanning Tree
IEEE 802.3 Ethernet
IEEE 802.3ab Gigabit Ethernet
IEEE 802.3af Power over Ethernet
IEEE 802.3at Draft Compliant Power over Ethernet
IEEE 802.3u Fast Ethernet
IEEE 802.3x Flow Control
IEEE 802.3z Gigabit Ethernet
ISO 8802-3

PACKAGE CONTENTS

Switch unit, power cord, self-adhesive rubber pads, rack-mount kit, user guide, installation CD, warranty flyer

WARRANTY AND OTHER SERVICES

Three Year Limited Hardware Warranty, including fans and power supply
Limited Software Warranty for 90 days
Advance Hardware Replacement with Next Business Day shipment in most regions
90 days of telephone technical support
Refer to www.3com.com/warranty for details.

ORDERING INFORMATION

PRODUCT DESCRIPTION

3Com Baseline Switch 2426-PWR Plus

3COM SKU

3CBLSF26PWR

Transceivers

3Com 1000BASE-SX SFP

3CSFP91

3Com 1000BASE-LX SFP

3CSFP92

Visit www.3com.com for more information about 3Com secure converged network solutions.

3Com Corporation, Corporate Headquarters, 350 Campus Drive, Marlborough, MA 01752-3064
3Com is publicly traded on NASDAQ under the symbol COMS.

Copyright © 2008 3Com Corporation. All rights reserved. 3Com and the 3Com logo are registered trademarks of 3Com Corporation. All other company and product names may be trademarks of their respective companies. While every effort is made to ensure the information given is accurate, 3Com does not accept liability for any errors or mistakes which may arise. All specifications are subject to change without notice.

401005-003 03/08

